

**Three Fires Council – COVID 19
Camp Operations Plan**

Camp Freeland Leslie





Background & Objectives

- Risk Management & Camping Committee's Assessment and Planning
- Objectives of our COVID-19 Strategy
 - Prevent spread through a layered mitigation strategy
 - Isolate suspected cases





Layered Mitigation Strategy

- Preventative Screening
- Concentric Group Circles or “Cohorts”
- Social Distancing
- Masks
- Enhanced Cleaning Protocols





Preventative Screening BSA Medical Form

BSA Annual Health and Medical Record

The BSA's annual health and medical record (AHMR) is required for all participants and must be updated at least annually. This is required for all Scouting events.

- Parts A and B are a consent, authorization / risk acknowledgement and a detailed health history.
- Part C, the pre-participation physical is recommended for all participants but required for any event lasting over 72 hours, including traditional resident camping.

In light of COVID-19, the following one-time exception policy will be in effect until August 31, 2020 with permission from the Boy Scouts of America National Office. *This policy will be used by the Three Fires Council; however, please note *this policy must be adopted on a council by council basis. Other council's policies may differ.*

Participants with a Part C completed on or after February 1, 2019.

- Validity of any Part C completed on or after February 1, 2019 is extended until August 31, 2020.
- Update Parts A and B of the AHMR within two weeks of your departure to camp. Download here: <https://www.scouting.org/health-and-safety/ahmr/>

Participants with no Part C or one prior to February 1, 2019, including new members.

- Attach a completed alternate exam (sports, school, annual well exam at pediatrician) completed on or after February 1, 2019. This will be accepted as a valid Part C until August 31, 2020.
- Update Parts A and B of the AHMR within two weeks of your departure to camp.



Preventative Screening BSA Medical Form

If a participant does not meet the criteria above, the following are options to consider to obtain an examination:

- *Telephonic well appointment* – Conducted with your existing health care provider (HCP) to complete the AHMR Part C exam and examiners signature virtually.
- *Professional or Compliance well exams* - Adult participants whose profession requires regular well or compliance exams (emergency responders, pilots, etc.) may also be able to complete the exam requirements by having the conducting HCP complete Part C either during those well checks or telephonically.
- *Local Community clinic or alternative HCP* - If primary HCP is unavailable, use alternatives / clinics in the local community such as alternate HCP, CVS, Rite Aid, Care Now, etc.

There will be no exceptions outside these parameters.





Preventative Screening High Risk Individuals

Information from the Centers for Disease Control and Prevention (CDC) states that older adults and people of any age who have serious underlying medical conditions are at higher risk for severe illness from COVID-19.

If you are in this group we recommend you consider staying home. If you decide to participate, please ensure you have approval from your health care provider prior to attending camp.





Preventative Screening High Risk Individuals

Based on what we know now, those at high-risk for severe illness from COVID-19 are:

- [People 65 years and older](#)
- People who live in a nursing home or long-term care facility
- People of all ages with [underlying medical conditions, particularly if not well controlled](#), including:
 - People with chronic lung disease or moderate to severe asthma
 - People who have serious heart conditions
 - People who are immunocompromised
 - Many conditions can cause a person to be immunocompromised, including cancer treatment, smoking, bone marrow or organ transplantation, immune deficiencies, poorly controlled HIV or AIDS, and prolonged use of corticosteroids and other immune weakening medications
 - People with severe obesity (body mass index [BMI] of 40 or higher)
 - People with diabetes
 - People with chronic kidney disease undergoing dialysis
 - People with liver disease





Preventative Screening Pre Arrival

- Everyone attending camp should self-monitor for symptoms as published by the Centers for Disease Control and Prevention starting 14 days prior to your camps first day.
- Pre-departure, leaders should utilize the Three Fires Council decision tree (shown in later slide) to assess any symptomatic individuals.
- Individuals who have symptoms published by the Centers for Disease Control and Prevention should stay home.
- Parents and leaders will be asked to sign an affidavit stating they have been symptom free prior to camp.





Preventative Screening Arrival

- Units will be assigned an arrival time and entry gate. Only one unit should be in the parking lot at a time.
- Staff will conduct a screening using the decision tree car by car. Once cleared, the unit will be permitted to continue the check-in process.
- Any symptomatic individuals will be isolated in a quarantine area outside of our health lodge. Individuals will be given the opportunity to be re-checked later in the day. If symptom free they will be allowed to rejoin their unit.





Preventative Screening Decision Tree

SCREENING QUESTION DECISION TREE

1. Have you been in contact with anyone who has COVID-19 or is otherwise sick?
2. Have you or anyone you have been in close contact with traveled on a cruise ship, internationally, or to an area with a known communicable disease outbreak in the last 14 days?

If the answer is “Yes” to either of these questions, the participant must stay home.

3. Are you in a higher-risk category as defined by CDC guidelines?

If the answer is “Yes” to this question, we recommend that you stay home. Should you choose to participate, you must have approval from your healthcare provider and then proceed to the symptom decision tree below.

If the above answers are “no,” proceed to this symptom decision tree.





Preventative Screening Decision Tree – Isolate If...

Any one symptom is present

SYMPTOMS PRESENT?

- Shortness of breath or difficulty breathing
- New or worsening dry cough
- Fever of 100 degrees or greater
- Flu-like symptoms
- Vomiting

Or any two symptoms are present

SYMPTOMS PRESENT?

- Cough
- Unexplained extreme fatigue or muscle aches
- Rash
- Sore throat





Preventative Screening Decision Tree

Symptoms that Will Initiate Emergency Medical Care

In cases where the following symptoms are present, emergency medical care will be sought. Medical consultation may be sought for additional symptoms that are severe or concerning to medical staff.

- Trouble breathing
- Persistent pain or pressure in the chest
- New confusion
- Inability to wake or stay awake
- Bluish lips or face





Preventative Screening Positive Test

- Once a positive test result has been received for a Scout or Leader, the above points are off and the entire Troop must be quarantined with zero contact with anyone outside of their Cohort.
- Contact tracing would begin and the Health Department would be requesting our data on who the individual has been in contact with. The Troop can depart camp at any time and head home without issue.
- Notification of a positive case would be communicated to all potentially exposed individuals.





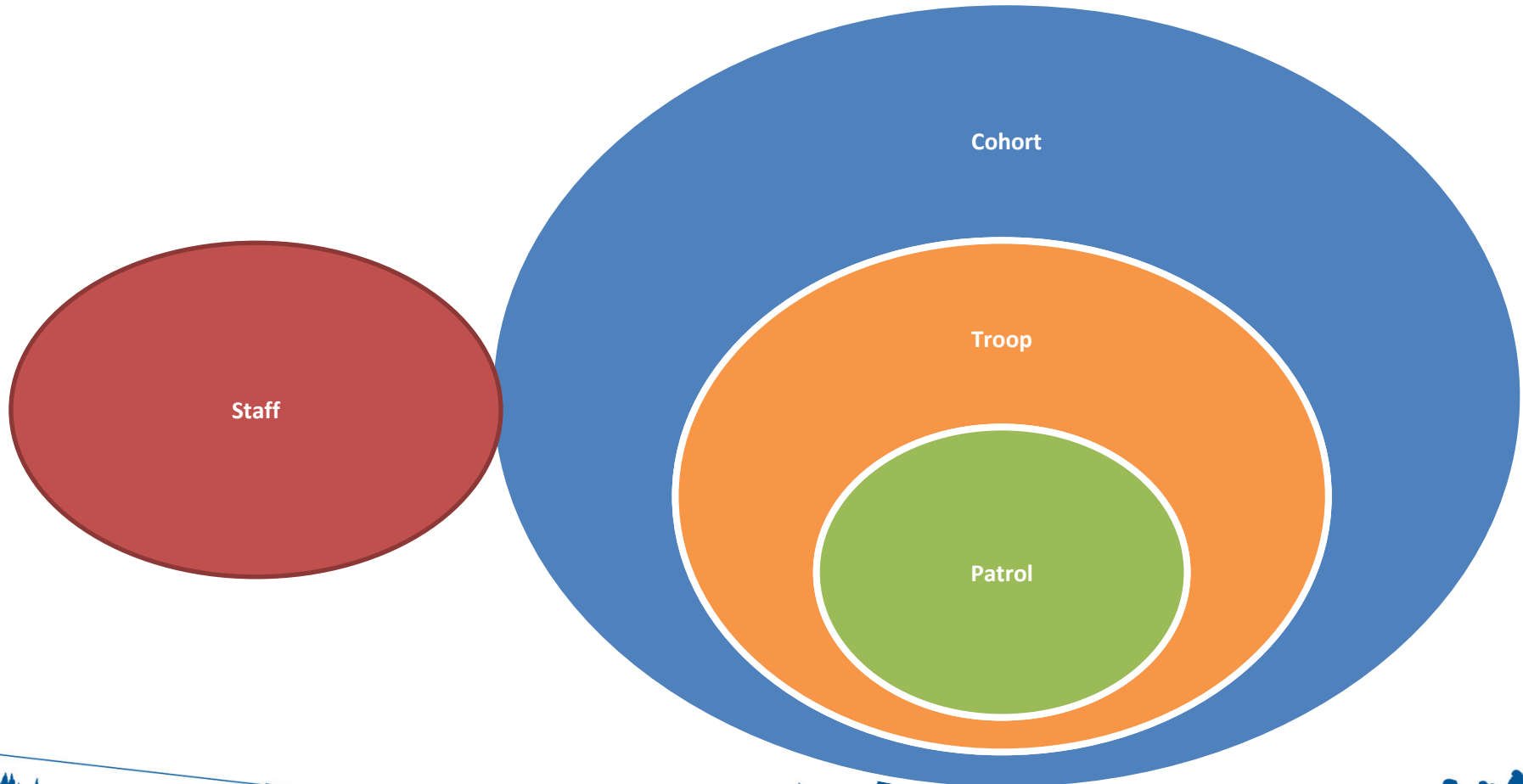
Concentric Group Circles

The American Camping Association's Field Guide for Camps on Implementation of CDC Guidance states, *"Consistent with experience from 2009-2010 H1N1 and in concert with guidance provided by Centers for Disease Control and Prevention (CDC) in 2010 on April 16, 2020; and on May 14, 2020; and the American Academy of Pediatrics (AAP); policies to maintain small group sizes, limit mixing of groups, and restrict large gatherings at camps are recommended. Limiting mixing of groups can be combined with a public health approach of establishing and maintaining "concentric group circles" for infection prevention and control. Infection spread can be slowed and more easily contained in smaller groups; when larger groups are required, it is beneficial if they consistently are comprised of the same constituent smaller groups, thereby limiting the number of potential contacts for each camper."*





Concentric Group Circles





Social Distancing & Face Coverings

- Social distancing should be practiced at all times to the extent possible. Social distancing is defined by the Centers for Disease Control as 6 feet between yourself and those around you. In cases where social distancing is not possible a mask must be properly worn to cover the mouth and nose.
- Each camper and leader will be issued a “Buff” to utilize as a face covering. You are welcome to use alternative coverings as well.
- *The CDC defines a close contact as someone who was within 6 feet of an infected person for at least 15 minutes starting from 48 hours before illness onset until the time the patient is isolated. (Centers For Disease Control And Prevention. (April 29, 2020). Contact Tracing : Part Of A Multipronged Approach To Fight The Covid-19 Pandemic)*





Cleaning Procedures

- Full Time Staff Member Dedicated to Sanitation – Sanitation Commissioner
 - Responsible for Staff Sanitation Training
 - Responsible for Quality Checks
 - Responsible for Overall Sanitation Schedule Development and Implementation





Cleaning Procedures

- Program Areas & Equipment
 - Areas will be cleaned/disinfected prior to use and between Cohorts
 - Program equipment in Program Areas will be cleaned/disinfected prior to use and between Cohorts





Cleaning Procedures

- Restrooms & Showers
 - Deep cleaning will take place daily (washing/disinfecting all walls, floors, shower curtains, fixtures, etc.)
 - High touch points will be cleaned/disinfected three times per day
 - Units Will Not Be Responsible for Camp Shower House/Washroom Cleaning Assignments
 - Staff Will Clean and Disinfect Campsite Kybos Between Cohorts





Cleaning Procedures

- Handwashing Stations and Sanitizer Dispensers
 - Sinks in Campsites, Scoutcraft, Shooting Sports, Visitor Privy, East Shower House
 - All Above Listed Sinks Will Have Go-Jo Antibacterial Soap Dispenser
 - Sanitizer Dispensers/Pump Bottles in Program Areas





Cleaning Procedures

- What Troops Should Bring to Clean in the Campsite
 - EPA Approved Disinfectants for Kybo Sink and Toilet Surfaces as Well as Troop Food Preparation Areas
 - Soap to Clean Cloth Masks
 - Clothesline to Dry Cloth Masks
 - Clean Cloth Towels/Rags
 - Nitrile Gloves for Cleaning Activities
 - Extra Hand Sanitizers
 - Disposable & Biodegradable Plates, Cups, and Cutlery
 - Water Bottles (no water coolers in program areas this year)





Cleaning Procedures

- Loaned Camp Equipment and Items Not Available
 - No Camp Equipment Will be Available for Issue (tents, dining flies, cots, patrol boxes, cooking gear, dutch ovens, water jugs, etc.)
 - Drinking Fountain – East Shower House
 - Campsite and Program Area Bubblers
 - Water Coolers in Program Areas





Program Changes

- Revised Program Plan
 - Program Rotation by Cohorts
 - Adult help will be needed in program areas
 - Downtime
 - First Year Camper Program
 - Camp chairs





Merit Badges/ Activities Offered

- **Scoutcraft**
 - Search and Rescue
 - Wilderness Survival
 - Camping
- **Ecology**
 - Environmental Science, Fish and Wildlife Management, Mammal Study, and Weather
- **Aquatics**
 - Canoeing, Kayaking, Swimming, Stand-up Paddleboard, Instructional swim, Advanced Safety Afloat/ Safe Swim Defense
- **Shooting Sports**
 - Archery, Shotgun, and Rifle





Merit Badges/ Activities Offered

- **Stagecraft**
 - Communications, Chess, and Game Design
- **New Frontiers**
 - Leatherwork, Wood Carving, Space Explorations, and Engineering
- **Eagles Nest**
 - Emergency Preparedness, First Aid, and Personal Fitness
- **Nature Hike**





Program Changes

- No Camp-wide Assemblies
 - Campfire Plan
 - Leader Dinner & Pig Roast
 - Chapel Service
 - OA
- Trading Post
 - Program Kits
 - Scheduled Times & Mobile Cart
 - Custom T-shirts (Order by Sunday)





Program Changes Visitors

BSA Policy Youth Protection Policy states that all aspects of the Scouting program are open to observation by parents and leaders. While we will not prevent a parent or leader from observing the program in accordance with this policy, we do ask that visitors be kept to essential purposes only. Visitors will will be screened based on our *Screening Decision Tree*.



Prepared. For Life.™



BOY SCOUTS OF AMERICA®



Payment Schedule Modifications

Payment Schedule Modifications

We recognize that payment at this time may be difficult for various reasons. Our early registration prices will be valid up to three weeks prior to the camp of your choice and late fees are being eliminated. If your family could use help with payment this year, don't hesitate to complete a campership (financial assistance) application. Troops with an existing registration at another camp that are seeking alternative plans for the summer will be given the early bird price.





Refund Policy Modifications

Refund Policy Modifications

Our regular refund policy states all refunds must be requested 30 days prior to camp. Having an accurate attendance count reduces waste when purchasing camper shirts, patches, and program supplies. In light of COVID-19 we are reducing our “no penalty” refund timeframe to 14 days prior to camp. Additionally, anyone requesting a camp fee refund due to COVID-19 will be eligible for a full refund, including their deposit if applicable as long as the request is made 14 days prior to your camp session. If you do opt to not attend camp this summer, we encourage you to consider rolling over your fees to 2021 or using some portion of your fees to make a donation to the Three Fires Council.





Additional Recommended Items to Bring

Additional Items to Bring to Camp - Individual

- Extra hand sanitizer or hand wipes as desired
- Personal facemasks if desired
- Camp chair
- Personal tent (recommended for those camping overnight)

Additional Items to Bring to Camp – Troop (CFL)

- Sanitizing solution to clean common areas in campsite
- Rags to clean common areas in campsite
- Extra hand sanitizer as desired
- Non-aerosol disinfectant spray
- Downtime activities

